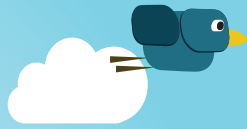


The Parkwise Promise



Dear Parent / Carer

We want to create a safer environment outside our school at the beginning and end of the school day. To help us do this we've signed up to Hampshire County Council's Parkwise Promise, which targets dangerous and inconsiderate parking near to schools.

Congestion on the roads around our school in the morning and afternoon poses a risk to our children and their families as they travel into school. This can be reduced by more children walking and cycling either all or part of the way into school. However, the school does recognise that there are circumstances when travelling to school by car is the only option. In this case we ask parents to drive and park with consideration.

Below are some points to consider when parking, some are legal requirements:

- do not park or stop on the 'School Keep Clear' zig zags
- do not park opposite or within 10m (approx. 33 feet) of a junction
- allow pedestrians better visibility by parking clear of any crossing points
- unless signposted otherwise, do not park on pavements or verges
- do not block vehicle access points including driveways
- keep clear of bus stops or designated bus bays.
- You **MUST NOT** leave a parked vehicle unattended with the engine running or leave a vehicle engine running unnecessarily while that vehicle is stationary on a public road.

If you would like to support this scheme please sign the tear off slip below and return it to school. You will then be issued with a sticker to display in you car to show your commitment to safe parking and this will hopefully encourage others to do the same.

Thank you for signing the Parkwise Promise

- ✓ I would like to support the Parkwise Promise and agree to park with consideration and in a responsible manner.
- ✓ I will only travel to and from school by car when necessary

Child's name:

Child's class:

Parent / Carer name:

Signed:



myjourneyhampshire.com