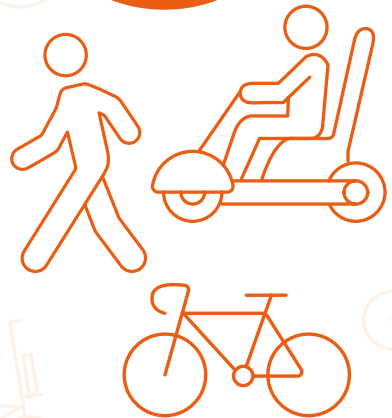


Barriers to walking and cycling

Have your say
between
**28 October and
22 December**

As part of Hampshire County Council's commitment to improve accessibility and enable more people to walk and cycle for short journeys, you are invited to help us identify where there are barriers to walking and cycling on your local streets.

We want to hear from all walkers and cyclists, including people who use **mobility aids (including mobility scooters), pushchairs or buggies**, people who use **cargo bikes and trailers**, or **other adapted cycles**.



Have your say

The survey is open from **28 October at noon until 22 December at 11.59pm.**

For more information, and to complete the survey:

Visit: hants.gov.uk/barriers-walking-cycling

Email: engagement.feedback@hants.gov.uk

Phone number: **0300 555 1388**