



The National School Travel Awards

The Travel Planning Team at Hampshire County Council supports schools to participate in Modeshift STARS: the national schools awards scheme which recognises schools that have demonstrated excellence in supporting cycling, walking, wheeling and other forms of sustainable travel. The scheme, supported by the Department for Transport (DFT) encourages schools across the County to join in a major effort to increase levels of sustainable and active travel to improve the health and well-being of children and young people. Every school in Hampshire can participate in Modeshift STARS for **free**. This includes support and training by our team.



APPROVED TRAVEL PLAN 2025



GOOD TRAVEL PLAN 2025



VERY GOOD TRAVEL PLAN 2025



EXCELLENT TRAVEL PLAN 2025



OUTSTANDING TRAVEL PLAN 2025

www.myjourneyhampshire.com/modeshiftstars

What will STARS deliver for your school?

- **Accreditation framework** so your school can audit the travel planning activities you have done to date and gain awards over five levels: **Approved, Good, Very Good, Excellent, Outstanding** to achieve an online School Travel Plan.
- **Effective planning tool** to achieve your school's **objectives** and **monitor** your success in increasing the number of pupils and their families who regularly walk, wheel, cycle and use other forms of sustainable travel on the school journey. This work further supports schools Climate Action Plans (e.g. by delivering initiatives to increase active travel to school to reduce outdoor air pollution).
- **A celebration and promotional tool** that reaches beyond your school informing the wider community of your commitment to improving safety and air quality in the local area, by encouraging reduced use of car travel where possible and promoting sustainable travel to your pupils and their families.
- Your school may have the opportunity to be selected for the annual **Modeshift National and/or Regional STARS Awards** (Early Years Establishment of the Year, Primary School of the Year, Secondary School of the Year, All Through School of the Year, and SEND School of the Year). Ashurst Pre-School, Lymington Church of England Infant School, Noadswood School and The Waterloo School are the 2025/2026 winners of the Local Authority STARS Schools of the Year for Hampshire **and** The Waterloo School is the STARS South East SEND School of the Region.
- To gain STARS accreditation, participating schools conduct an annual 'hands up' survey where pupils are asked 'How they travel to school?' and 'How they would prefer to travel to school?'. This gives a good insight into actual **travel trends** and how pupils would like to travel. The data helps schools to set **realistic targets**. By having a sequence of Hands Up Surveys, this also helps schools to visually **see how their participation in events/initiatives is impacting on modes of travel**.
- Why not get started now? Take a look at the My Journey Hampshire website <https://myjourneyhampshire.com/stars-training> Here you can access the STARS training films which all have subtitles and clear instructions on how to use the system.

**note there is separate guidance on the 'hands up survey' for SEND schools.*

★ For the latest active travel news:

★ Like and follow:

★  **@myjourneyhants**

★  **@myjourneyhampshire**

★  **@MyJourneyHants**

★ **Email: travelplans@hants.gov.uk**



Total number of STARS accredited schools in Hampshire (updated July 2025)



Basingstoke & Deane Borough Council	9	Hart District Council	6
Eastleigh Borough Council	14	New Forest District Council	47
East Hampshire District Council	11	Rushmoor Borough Council	10
Fareham Borough Council	8	Test Valley Borough Council	16
Gosport Borough Council	7	Winchester City Council	11
Havant Borough Council	10	Hampshire total	149

★ For the latest active travel news:

★ Like and follow:

Facebook @myjourneyhants

Instagram @myjourneyhampshire

X @MyJourneyHants

Email: travelplans@hants.gov.uk



STARS accredited schools Summer Term 2025

School	Level
All Saints Church of England Aided Junior School	Approved
Ashley Junior School	Approved
Bidbury Infant School	Approved
Bishop Challoner Catholic VA Secondary School Basingstoke	Approved
Bosmere Junior School	Approved
Braishfield Primary School	Approved
Brookfield Community School and Language College	Approved
Calthorpe Park School	Approved
Church Crookham Junior School	Approved
Cornerstone C of E (Aided) Primary School	Approved
King's Academy Brune Park	Approved
Hawley Primary School	Approved
Hollywater School	Approved
St John the Baptist Church of England Primary School (Fareham)	Approved
Tavistock Infant School	Approved
Upham Church of England Aided Primary School	Approved
Wellstead Primary School	Approved
Alderwood Senior School	Good
Andrews' Endowed Church of England Primary School	Good
Ashley Infant School	Good
Ashurst Pre-School	Good
Boorley Park Primary School	Good
Botley Church of England Controlled Primary School	Good
Brockenhurst Church of England Primary School	Good
Bursledon Federation of Bursledon CE Infant & Bursledon Junior Schools	Good
Cadland Primary School	Good
Cliddesden Primary School	Good
Fairfield Infant School	Good
Fairfields Primary School	Good
Hale Primary School	Good
Hazel Wood Infant School	Good
Kings Academy Rowner Junior	Good
Kings Copse Primary School	Good
Knightwood Primary School	Good

★ For the latest active travel news:

★ Like and follow:

Facebook [@myjourneyhants](https://www.facebook.com/myjourneyhants)

Instagram [@myjourneyhampshire](https://www.instagram.com/myjourneyhampshire)

X [@MyJourneyHants](https://twitter.com/MyJourneyHants)

Email: travelplans@hants.gov.uk



Lockerley Church of England Endowed Primary School	Good
Lydlynch Pre School	Good
Oakridge Schools Federation	Good
Oliver's Battery Primary School	Good
Orchard Infant School	Good
Pennington Church of England Junior School	Good
Pennington Infant School	Good
Pinewood Infant School	Good
Ringwood Junior School	Good
Rownhams St John's Church of England Primary School	Good
Sarisbury Infant School	Good
Shakespeare Infant School	Good
South Farnborough Infant School	Good
St Bede's Catholic Voluntary Aided Primary School Basingstoke	Good
St Bede Church of England Primary School	Good
The Cambridge Primary School	Good
The Crescent Primary School	Good
The Toynbee School	Good
Wildern School	Good
William Gilpin Church of England Primary School	Good
Winton Community Academy	Good
Woodlea Primary School	Good
Chandler's Ford Infant School	Very Good
Elson Junior School	Very Good
Guillemont Junior School	Very Good
Harrison Primary School	Very Good
Hythe Primary School	Very Good
Park Primary School	Very Good
Noadswood School	Very Good
St John the Baptist Church of England Primary School (Winchester)	Very Good
Clanfield Junior School	Excellent
South Farnborough Junior School	Excellent
Whitewater C E Primary School	Excellent
The Waterloo School	Outstanding
Trosnant Schools Federation	Outstanding

For the full list of ALL Hampshire schools currently accredited, go to:

<https://myjourneyhampshire.com/stars-schools>

★ For the latest active travel news:

★ Like and follow:

Facebook [@myjourneyhants](https://www.facebook.com/myjourneyhants)

Instagram [@myjourneyhampshire](https://www.instagram.com/myjourneyhampshire)

X [@MyJourneyHants](https://twitter.com/MyJourneyHants)

Email: travelplans@hants.gov.uk



A focus on: Clanfield Junior School, Clanfield, Waterlooville.

A case study showing how engagement with community partners can build support and shared responsibility for active and safe travel to school.

Clanfield Junior School joined Modeshift STARS in 2017. The school currently holds an Excellent level Travel Plan.

The school is situated in a rural location on Little Hyden Lane. The setting means benefiting from the beautiful scenic environment around, but this also leads to challenges: footways connecting the school to the village and the Park and Stride locations are sparse and where they do exist, are often of poor quality and narrow. Also, the adjacent East Meon Road is a busy through-route off the A3. The challenges of the infrastructure along with a year-long absence of a School Crossing Patrol (now reinstated) has reduced families' confidence to Park and Stride or park further away from school and onward walk/wheel/scoot.

Despite the challenges, the school works hard to:

- [campaign to improve the local infrastructure,](#)
- [educate the school and wider community about all aspects of road safety,](#)
- [promote walking and use of the Park and Stride sites,](#)
- [participate in fun active travel events such as Walk to School Week,](#)
- [reduce the number of cars coming all the way to school.](#)

To expand further:

[Campaigning to improve the local infrastructure:](#)

The drive to improve the local infrastructure benefits not only the school community but the wider local area. The school continue to work with local councillors, Hampshire County Council's: Travel Planning Team, Road Safety Team and Traffic Management Team and NSL parking services, actively lobbying for improved conditions for everyone. For example, the school has led on lobbying for a 20mph speed limit for East Meon Road. The school also liaised with the Local Authority to push to fill the vacant School Crossing Patrol post.

★ For the latest active travel news:

★ Like and follow:

★  [@myjourneyhants](#)

★  [@myjourneyhampshire](#)

★  [@MyJourneyHants](#)

★ Email: travelplans@hants.gov.uk



The actions the school and partners are engaged with are communicated to the school community and their assistance in reporting issues is requested. In-depth parent / carer surveys have also been completed to understand behaviours and barriers to active and safe travel and to provide evidence to support lobbying / applications.

Educating the school and wider community about all aspects of road safety:

Clanfield Junior has a strong commitment to sustainability goals, which underpins their approach to school travel planning. The school state that success depends on effective collaboration with local partners and agencies to build shared responsibility.



Above: promoting Clanfield Junior's work with East Hants Police.

To cite some examples of this collaboration:

The school works with Local Authority Travel Planning Officer, Agata, who helps set targets such as establishing a Park and Stride scheme and associated resources for sharing with the school community. Agata helps translate actions into Modeshift STARS accreditation.

The school received support from the local PCSO during a speed monitoring session outside the school. The event was so well received that the following year, the

★ For the latest active travel news:

★ Like and follow:

★  @myjourneyhants

★  @myjourneyhampshire

★  @MyJourneyHants

★ Email: travelplans@hants.gov.uk

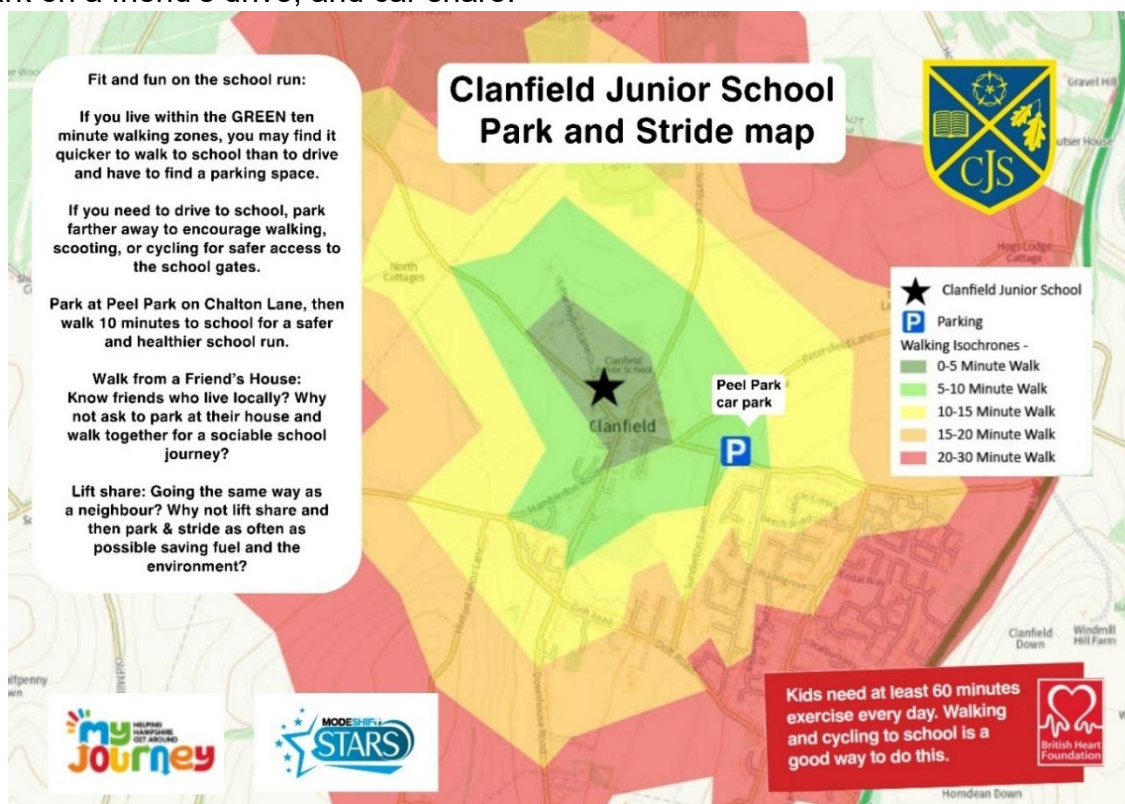


school partnered with the local Speedwatch group. During both sessions, pupils gained practical road safety experience, engaged with residents, and helped raise driver awareness. The observations and learning points are onward shared with the school community and partners to reinforce safe travel behaviours and provide evidence for improving local infrastructure.

The JRSO team plays a key role in road safety and active travel work – delivering messages through assemblies, parent communications and organising events / campaigns.

Promotion of walking and use of the Park and Stride sites:

The school actively promotes Park and Stride sites, working with the Local Authority to create locations such as Peel Park and creating a digital map (see below) for sharing with families. Families are also encouraged to walk from a friend's house, park on a friend's drive, and car share.



Above: Clanfield Junior School's Park and Stride map.

★ For the latest active travel news:

★ Like and follow:

Facebook @myjourneyhants

Instagram @myjourneyhampshire

X @MyJourneyHants

Email: travelplans@hants.gov.uk



Clanfield Junior and Petersgate Infant have worked together to adjust the timing of their school days to allow parents / carers more time between drop off / collections to encourage use of the Park and Strides.

The health and environmental benefits of active travel are very much reinforced in the school's work with Petersfield Climate Action Network (PeCAN) workshops exploring climate change and encouraging care for the local environment.

The school have increased the number of school trips within the local vicinity such as Clanfield Pond, Peel Park, Little Hyden Woods and Catherington Lith. This helps pupils to connect with the environment and community as well as providing a great opportunity to practice important road safety skills and experience the joy of walking / wheeling. These visits also showcase collaboration with partners for example, the owners of Little Hyden Woods who share their knowledge and passion for the woodland.

Participation in fun active travel events such as Walk to School Week:

The school is keen to take part in events and campaigns that promote road safety and active travel. Some of the highlights are:

[Walk to School Week](#), the Be Bright Be Seen event, [The Clean Air Challenge 2025](#) and a Road Safety Green Cross Code poster competition.

Reduce the number of cars coming all the way to school:

The efforts of the school to embed the importance of safer and active travel are reflected in the improvement in the travel behaviours of the school community. As an example, the school achieved a fantastic 12% reduction in car alone travel last year. At the same time, there was a 29% increase in the use of Park and Stride and a 9% increase in car sharing.

In response to the question, 'What top tips would you give to other schools joining / engaging in Modeshift STARS'? the school gave the following great pointers:

- **Keep being creative** - try out new ideas and see what works.
- Say yes to help when it's offered - working with others can make a big difference.
- **Work closely with your local Travel Planning Officer.**
- **Stay positive**, even when things don't go to plan!
- **Get pupils involved as much as possible** - their energy and ideas can really drive change.

★ For the latest active travel news:

★ Like and follow:

★  [@myjourneyhants](#)

★  [@myjourneyhampshire](#)

★  [@MyJourneyHants](#)

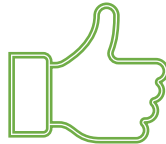
★ Email: travelplans@hants.gov.uk



- **Talk about what you're doing with the wider school community.** Sharing your efforts helps bring everyone on board, including parents and local residents.
- **And most importantly, believe in yourself!** You've got the tools to inspire future generations and help create better places to live, learn, play, and work.

The school believe that success cannot be achieved in isolation.
Producing a meaningful and successful travel plan requires collaboration with community partners.

Some truly inspirational community collaborative work, keep up the great work!



If you would like your school to be showcased like our featured school, please email: travelplans@hants.gov.uk

Why not sign-up to the **My Journey newsletter** to find out about upcoming events and resources?

Hampshire schools: <https://myjourneyhampshire.com/newsletter-sign-up>



★ For the latest active travel news:

★ Like and follow:

★  @myjourneyhants

★  @myjourneyhampshire

★  @MyJourneyHants

Email: travelplans@hants.gov.uk

