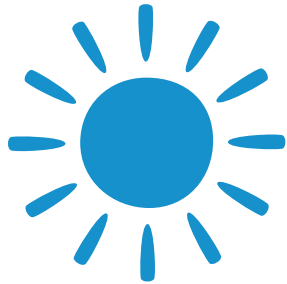
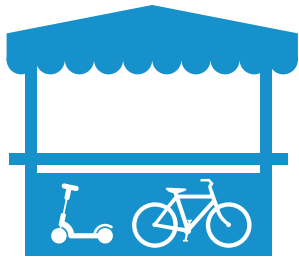


CLIMATE ACTION PLANS AND TRAVEL PLANNING

Climate Action Plans (CAPs) are strategic frameworks that help education settings initiate or advance sustainability efforts. Travel Planning promotes active and sustainable travel options like walking, cycling, and public transport. These two approaches complement each other, supporting behaviour change and long-term sustainability goals.

This resource explores how Travel Planning can contribute to your setting's Climate Action Plan, aligning with the four core areas of development.

Decarbonisation: Transport typically accounts for around 33% of emissions in education settings. Promoting active and sustainable travel can significantly reduce this.



Adaptation and Resilience: Considering links between travel choices, health and weather can be incorporated, alongside looking to adapt the site for increased levels of active travel.

Biodiversity: Improving air quality, and understanding the impact of emissions, is a key component of promoting biodiversity and Travel Planning.



Climate Education and Green Careers: Supporting active and sustainable travel skills and knowledge supports pupils and students prepare for a world impacted by climate change.

DECARBONISATION

Transport typically accounts for 33% of emissions within education settings. Travel Planning enables settings to reduce these emissions through promoting healthy and sustainable forms of travel which also have multiple additional benefits for pupils and students, their families and the community at large.

Travel Planning can support decarbonisation by helping analyse, assess and reduce Scope 3 emissions. Here are some of the ways this can be achieved:

- **Promote a decrease in car alone journeys** through transitioning to active and sustainable modes.
- **Assess Scope 3 emissions** data through surveys, postcode mapping and ongoing analysis through Modeshift STARS.
- Consider and plan for a **whole setting approach** to promoting active and sustainable travel, including both staff and students.
- **Continually promote active and sustainable modes of travel**, and the associated health and wellbeing benefits, through targeted initiatives, events and messaging.
- **Promoting use of public transport** for school trips.
- **Promoting car sharing** for both students and staff.



ADAPTATION AND RESILIENCE

Alongside efforts to decarbonise activities, education settings will need to adjust to more frequent extreme weather, changes in behaviours brought about through decarbonisation and planning for possible health impacts of a changing climate. Travel Planning and Climate Action plans can work in tandem to mitigate some of these risks when related to travel and help settings think about infrastructure requirements for a future with higher levels of active and sustainable travel on the part of students and staff.



Can adaptations be made that address future transport needs and enable sustainable modes of travel?

- Is there enough **cycle / scooter storage** in place?
- Could using **Healthy Streets assessment** tool help promote active and sustainable travel through identifying possible infrastructure change?
- Are there **EV charging points** at school?
- Is there sufficient shelter for students and their families in the event of extreme weather events?

Considering active travel and extreme weather:

- Can **uniform policies** be reviewed to enable higher levels of active travel in a variety of weathers?
- What messaging do students receive on **health impacts of modes of travel and the weather**? Are warnings and notices in place for extreme weather events?

BIODIVERSITY

Improving air quality is a key component of both promoting biodiversity and Travel Planning, having health benefits for students, families and the community, alongside benefits to ecosystem health and species populations. Travel Planning also promotes increased access to and connection with nature, in and around educational settings.

Poor air quality negatively impacts biodiversity. Travel Planning can support **improving air quality** by:

- Helping **decrease the number of cars** travelling to school.
- Educational **initiatives exploring and monitoring air quality** and its impact on health and the environment.
- **Regular events** such as Clean Air Day to promote awareness and action.
- Promote **increase access to nature for children** and young people through active travel and route planning, with events such as Spring Into Action.
- Supporting the use **Healthy Streets Assessments**, which can help evaluate local streets for clean air and shade and shelter from trees and the impact these have on users.



CLIMATE EDUCATION AND GREEN CAREERS

Promoting active and sustainable travel skills and knowledge supports pupils and students prepare for a world impacted by climate change whilst also giving them an understanding of local and global environmental challenges and how they can take individual and collective action to address them.



Travel Planning supports Climate Education and Green skills in a number of ways:

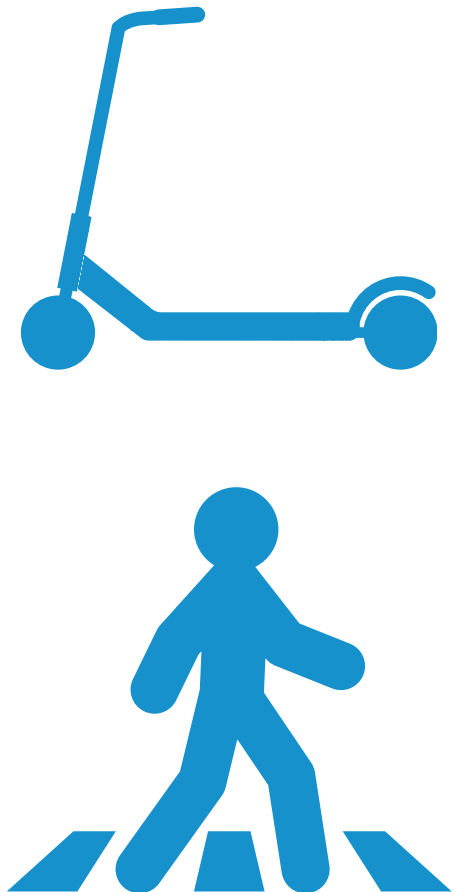
- Promoting **understanding of how transport impacts climate change and health.**
- Promoting **skills training**, such as cycle and pedestrian skills, which enable pupils and students to travel more sustainably.
- Promoting **healthy habits that can lead to lifelong sustainable choices.**
- Gives pupils and students experience of **planning and running behaviour change initiatives** within the school community.
- Gives pupils and students an opportunity to **take action** within their day to day lives that can contribute to sustainability.

HCC SUPPORT AVAILABLE

There is a range of support available to educational settings from HCC, both in regards to Travel Planning and for implementing Climate Action Plans. These pages explore the teams involved, the Travel Planning Team and Hampshire Improvement and Advisory Service (HIAS)

Travel Planning Team - schooltravelplans@hants.gov.uk

- Work with schools to **promote active and sustainable travel** and also aim to **reduce non-essential car journeys**.
- Key objectives focus on **increasing physical activity levels, improved mental health, reducing obesity levels, improving air quality and making roads safer for all**.
- Offer **guidance and support to schools** planning and delivering effective **behaviour change initiatives and campaigns**.
- Support schools to **develop Travel Plans** to promote active and sustainable travel, primarily using Modeshift STARS which supports auditing, planning and monitoring and can lead to an accreditation.
- Support can also include **parent and staff surveys, postcode mapping and assistance with Park and Stride set up and promotion**.
- **Events, initiatives and resources** shared with schools to promote active and sustainable travel.



HCC SUPPORT AVAILABLE

There is a range of support available to educational settings from HCC, both in regards to Travel Planning and for implementing Climate Action Plans. These pages explore the teams involved, the Travel Planning Team and Hampshire Improvement and Advisory Service (HIAS)



Hampshire Improvement and Advisory Service (HIAS) - hias.enquiries@hants.gov.uk

- The HIAS team supports schools in **developing climate change education** by providing a range of subject **resources, training and through promoting student voice.**
- **Subject-specific guidance offered**, such as lesson resources which can be found on the **free to access Open Moodle Course: Climate Unity - Hampshire**
Here you will find resources to support your teaching about the Climate Crisis. Materials are especially suitable for KS2 and KS3, but many will also be adaptable for younger children as well as for older young people.
- **Offers access to schools for innovative projects** such as the **Climate Unity conference** for pupils. In 2024 over 4500 KS2 pupils joined in the event taking part in workshops and sharing their concerns and solutions to environmental issues. Please contact the above email address for more information.

LINKS AND RESOURCES

Please see below for useful links and resources where further information can be found. These include links to online resources that can support Travel Planning and Climate Action Plans, links for charities and organisations giving further support on CAPs, and Climate Action Plan templates.

Travel Planning

- [MyJourney Education Website](#)
- [MyJourney Air Quality Resources](#)
- [Active and Sustainable Travel Initiative Quick Guides](#)
- [Modeshift STARS for Hampshire Schools](#)
- [Active and Sustainable Travel Events Challenges](#)

Climate Action Plans

- [Government Guidance Homepage for CAPs](#)
- [Course: Climate Unity - Hampshire](#)
- [Climate Ambassadors](#)
- [Friends of the Earth - Climate Action Plan for schools and colleges](#)
- [Eco Schools](#)



Climate Action Plan Templates

- [Let's Go Zero - access through climate action advisors](#)
- [Transform Our World](#)
- [Climate Friendly Schools](#)

